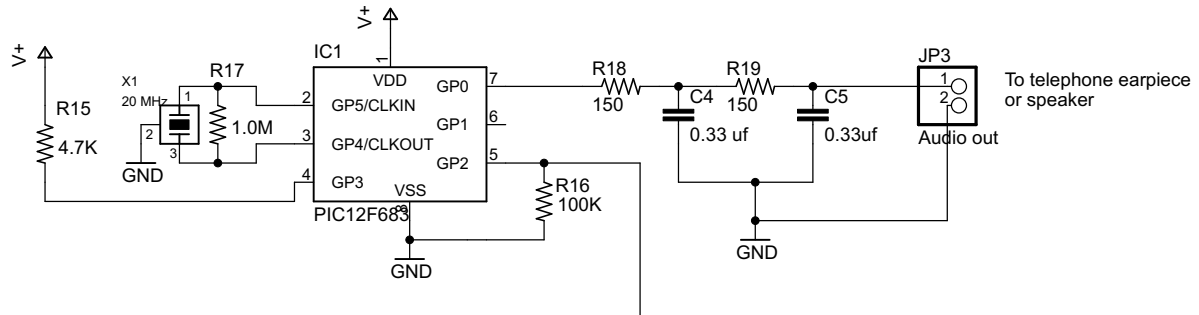
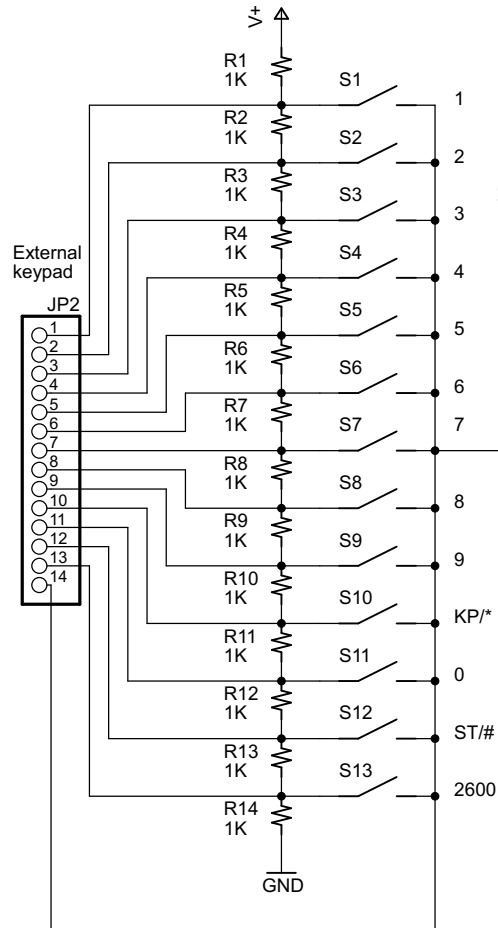
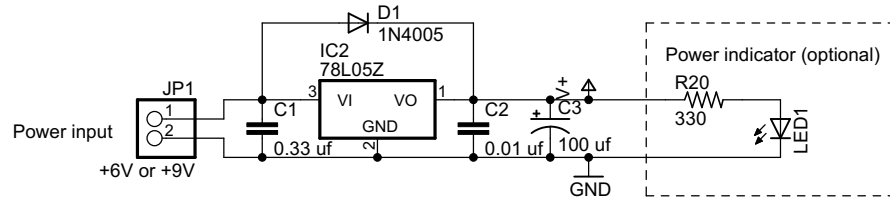


9 volt operation: install C1, C2, IC2; leave D1 empty
 6 volt operation: install D1; leave C1, C2, IC2 empty
 Damage will result if D1 and IC2 are installed at the same time!



Esquire Blue Box, 2008 Edition

Design: D. Froula

Schematic capture: P. Lapsley

TITLE: esq01c

Document Number:

REV:

Date: 7/19/2008 11:43:05 AM

Sheet: 1/1